



GMT MONTHLY MEMBERSHIP PROGRESS REPORT

Results as of: 1/31/2018

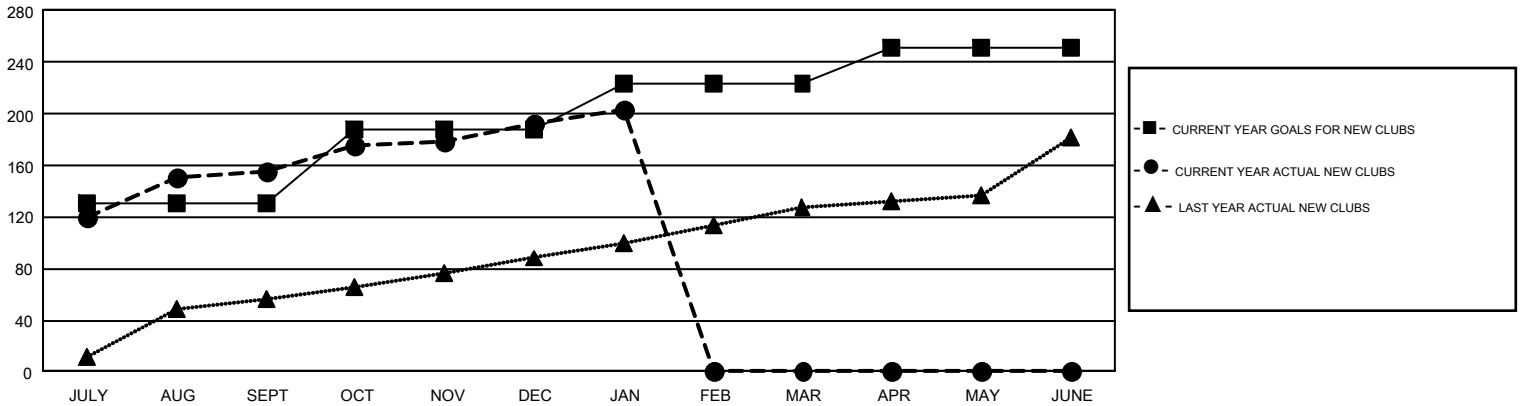
GMT Constitutional Area 6, Group A

GMT: SWADESH RANJAN SAHA

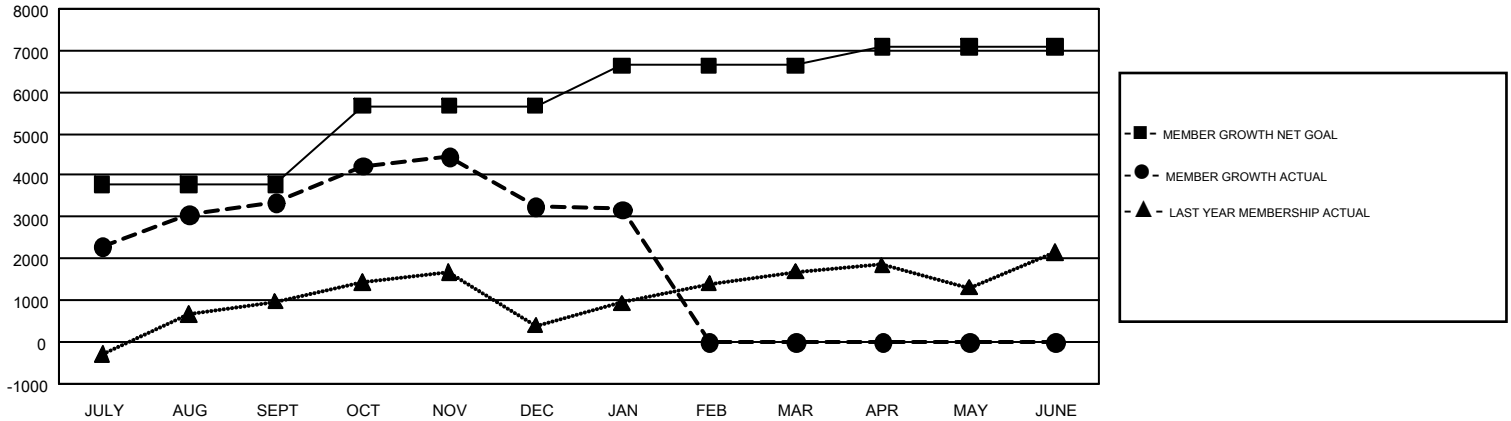
REPORT DOES NOT INCLUDE CLUBS IN UNDISTRICTED AREAS.

Clubs				Members			
RESULTS FOR 2017-2018				RESULTS FOR 2017-2018			
QUARTER	NEW CLUB GOAL	NEW CLUBS	DROPPED CLUBS	QUARTER	MEMBER GROWTH NET GOAL	MEMBER GROWTH ACTUAL	DROPPED MEMBERS ACTUAL (including transfers)
JULY/AUG/SEPT	130	155	7	JULY/AUG/SEPT	3,782	4,994	1,520
OCT/NOV/DEC	57	38	67	OCT/NOV/DEC	1,885	2,085	2,117
JAN/FEB/MAR	37	10	9	JAN/FEB/MAR	974	992	759
APR/MAY/JUNE	27	0	0	APR/MAY/JUNE	457	0	0

GOALS AND ACTUAL NEW CLUBS CUMULATIVE



GOALS AND ACTUAL MEMBERS CUMULATIVE



DROPPED CLUBS: 83	764 CLUBS OF 1,636 ADDED 1 OR MORE NEW MEMBERS	GENDER DISTRIBUTION MALE 37,542 (74.39%) FEMALE 12,926 (25.61%)
DROPPED MEMBERS DECEASED 67 CLUB CANCELLED 1,780 OTHER 2,546 TOTAL 4,393	CLICK HERE FOR CUMULATIVE MEMBERSHIP DATA	TOTAL FAMILY UNIT MEMBERS 20,354 FAMILY MEMBERS PAYING HALF DUES 12,156